

LEGEND		SV04P3
	200mm Centrifugal Fan	
	F7 Filter & Box	
	Fresh Air Intake Grill	
	150mm Ceiling Diffuser	
	Y Branch	
	Double Branch Take-off	
	150mm Acoustic Insulated R0.6 Flexible Duct	
	200mm Insulated R0.6 Flexible Duct	
	200mm Nude Flexible Duct	
	Tempering Unit	

**PARTS LIST**

*Products required/recommended:*

- 1x FAN1112, SV04P3 - Standard **Positive Pressure system kit**
- 1x DCT2276, Additional Outlet
- 1x DCT3230, 2kW Tempering Heater

*Additional duct estimate:*

- 2x DCT0634, 150mm x 6m acoustic insulated duct
- DCT0787, Manual barrel damper (As Required)
- 1x DCT0723, 150mm duct connector

**NOTES**

- + This design is developed based on the information provided, and the layout is applicable to the specified SmartVent products only.
- + While the Diffuser locations may vary to suit the install, please ensure its <2m from the windows and >1m from walls & smoke detectors/any sensors.
- + Diffusers are adjustable to balance the airflow into the respective areas. For further airflow balancing, barrel dampers are available separately.
- + This layout should be used alongside the duct layout guidelines in the system installation instructions. It is recommended that ducting is taught and as straight as possible, avoiding sharp bends.
- + For the Outside Air intake Grill, ensure a minimum separation distance of >1m from the natural ventilation openings and >2m from any exhaust vents.
- + Please note that this design is not to scale.
- + Systems are plotted to the ideal conditions. The final runs, parts list, and install are to be determined/confirmed by the installer on site, while the system functionality must be confirmed by the client.

**TECHNICAL NOTES**

- + If the house has an open wall cavity or tight roof space, fresh air intake should always be from outside and not from the ceiling space.
- + At least 3m of acoustic ducting from the fan must be used for noise attenuation. To minimize the fan break-through noise acoustic wrapping can be used. + Fan must be mounted away from the sleeping areas.

**Acoustic Insulated Duct**

150mm x 3m	DCT0633
150mm x 6m	DCT0634
200mm x 3m	DCT0635
200mm x 6m	DCT0636



**Insulated Duct**

150mm x 3m	DCT0583
150mm x 6m	DCT0584
200mm x 3m	DCT0585
200mm x 6m	DCT0586



**Nude Duct**

150mm x 3m	DCT0561
150mm x 6m	DCT0562
200mm x 3m	DCT0563
200mm x 6m	DCT0564



**Duct Fasteners**

Hanging Strap	DCT2299
Duct Tape 48mm x 5m	DCT0173
Duct Tape 48mm x 30m	DCT0807



**Duct Joiners**

150mm Metal	DCT0723
200mm Metal	DCT0724



**Y Branch**

150-150-150	DCT1233
200-150-150	DCT0379
200-200-200	DCT0376
250-200-200	DCT0471



**Branch Take Off**

200-200-150	DCT0877
250-250-150	DCT0880



**Double Branch Take Off**

200-150-150-150	DCT0889
250-200-150-150	DCT0891



**Fixed Louvre Grilles – White Plastic**

125mm	DCT0041
150mm	DCT0063
200mm	DCT0340



**Ceiling Diffuser – Square White Plastic**

150mm Flat	DCT2208
------------	---------



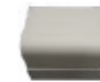
**Extract Diffuser – Round White Plastic**

150mm	DCT2610
200mm	DCT2611



**Noise Reduction Fan Housing**

150/200mm Centrifugal	DCT2297
150/200mm Mixed Flow	DCT2298



**Replacement Filters**

G4 Sock	DCT1411
G4 Filter	DCT2221
F7 Filter/EU 7	DCT2093
F7 with Carbon Filter	DCT2277
HEPA with Carbon Filter	DCT2278



**Replacement Filters (2 Pack)**

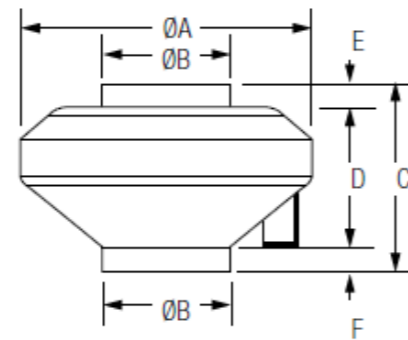
G3 Filter for BAL225	DCT4493
G3 Filter for BAL405/405 PLUS	DCT4494
G3 Filter for SYN190/E/E2	DCT4495
G3 Filter for SYN1015/E/E2	DCT4496
G3 Filter for SYN2025/E/E2	DCT4497
G3 Filter for SYN3035/E/E2	DCT4498

**Extension Leads**

3m Fan Lead (4-wire)	FAN2190
3m Heater or Damper Lead (3-wire)	FAN2194



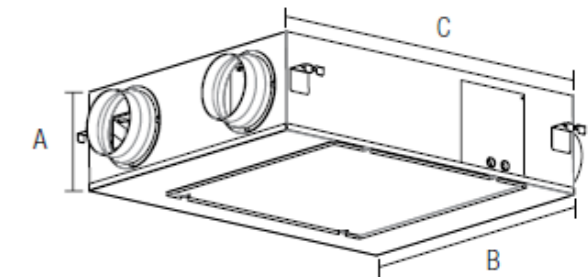
Specifications	SV01L+	SV01P3	SV02L+	SV02P3	SV02AD	SV04L+	SV04P3	SV04AD	SV06L+	SV06P3	SV06AD
House Size	Up to 100m <sup>2</sup>		Up to 100m <sup>2</sup>		Up to 280m <sup>2</sup>		Up to 560m <sup>2</sup>				
Max. Fans	2	4	2	4	2	4	2	4	2	4	
Fan Type	AC	EC	AC	EC	AC	EC	AC	EC	AC	EC	
Spigot Size	150mm		150mm		200mm		200mm				
Fan Speeds	3	Infinitely Variable	3	Infinitely Variable	3	Infinitely Variable	3	Infinitely Variable	3	Infinitely Variable	
Max. Air Flow per Fan @ 0 Pa	152 l/s, 548m <sup>3</sup> /hr	175 l/s, 630m <sup>3</sup> /hr	152 l/s, 548m <sup>3</sup> /hr	175 l/s, 630m <sup>3</sup> /hr	282 l/s, 1014m <sup>3</sup> /hr	284 l/s, 1023m <sup>3</sup> /hr	282 l/s, 1014m <sup>3</sup> /hr	284 l/s, 1023m <sup>3</sup> /hr	282 l/s, 1014m <sup>3</sup> /hr	284 l/s, 1023m <sup>3</sup> /hr	
Max. Air Flow per Fan @ 150 Pa	98 l/s, 353m <sup>3</sup> /hr	132 l/s, 480m <sup>3</sup> /hr	98 l/s, 353m <sup>3</sup> /hr	132 l/s, 475m <sup>3</sup> /hr	211 l/s, 760m <sup>3</sup> /hr	206 l/s, 742m <sup>3</sup> /hr	211 l/s, 760m <sup>3</sup> /hr	206 l/s, 742m <sup>3</sup> /hr	211 l/s, 760m <sup>3</sup> /hr	206 l/s, 742m <sup>3</sup> /hr	
Max. Static Pressure per Fan	336 Pa	568 Pa	336 Pa	568 Pa	441 Pa	461 Pa	441 Pa	461 Pa	441 Pa	461 Pa	
Power Supply	220–240V AC 50 Hz		220–240V AC 50 Hz		220–240V AC 50 Hz		220–240V AC 50 Hz				
Input Power per Fan	57W		57W		105W	85W	105W	85W	105W	85W	
Current (A) per Fan	0.26A		0.26A		0.47A	0.7A	0.47A	0.7A	0.47A	0.7A	
Operating Temp	–25°C to 50°C		–25°C to 50°C		–25°C to 50°C		–25°C to 50°C				
Sound Level	47 dB(A)		47 dB(A)		53 dB(A)		53 dB(A)				



Fan Dimensions (mm)	A	B	C	D	E	F
Spigot Size – 150mm	340	150	280	170	50	60
Spigot Size – 200mm	340	200	280	170	50	60

Specifications	SYN1015AD	SYN2025AD	SYN3035AD	BAL225	BAL405
Fan Type	AC Centrifugal			EC Centrifugal	EC Centrifugal
Max. Fan Cores	2			–	
Spigot Size	150mm			125mm	150mm
Fan Speeds	3			10	
Max. Air Flow per Fan @ 0 Pa	77 l/s, 277m <sup>3</sup> /hr	97 l/s, 350m <sup>3</sup> /hr	130 l/s, 468m <sup>3</sup> /hr	76 l/s, 275m <sup>3</sup> /hr	136 l/s, 490m <sup>3</sup> /hr
Max. Air Flow per Fan @ 150 Pa	38 l/s, 137m <sup>3</sup> /hr	60 l/s, 216m <sup>3</sup> /hr	90 l/s, 324m <sup>3</sup> /hr	62 l/s, 223m <sup>3</sup> /hr	110 l/s, 395m <sup>3</sup> /hr
Max. Static Pressure per Fan	238 Pa	285 Pa	354 Pa	380 Pa	600 Pa
Power Supply	230–240V AC 50 Hz			220–240V AC 50 Hz	
Total Input Power	120W	178W	280W	128W	173W
Current (A)	0.46A	0.7A	1.1A	0.58A	0.79A
Operating Temp	–10°C to 40°C			–20°C to 45°C	
Sound Level	31.5 dB(A)	34 dB(A)	37 dB(A)	39 dB(A)	

Energy Recovery Core Dimensions (mm)	A	B	C
SYN1015AD	230	690	860
SYN2025AD	230	710	930
SYN3035AD	240	820	1070



Heat Recovery Core Dimensions (mm)	A	B	C
BAL225	285	650	550
BAL405	524	745	776

