



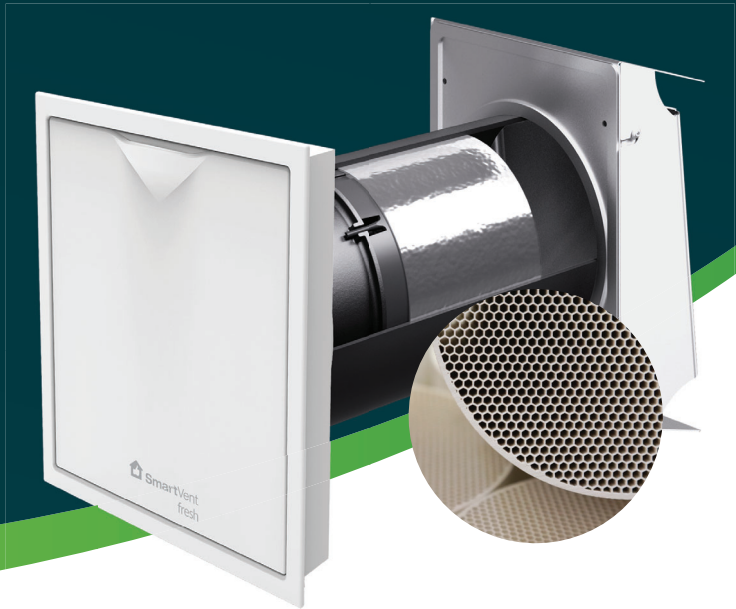
# SmartVent

fresh



## FLEXIBLE VENTILATION for every space

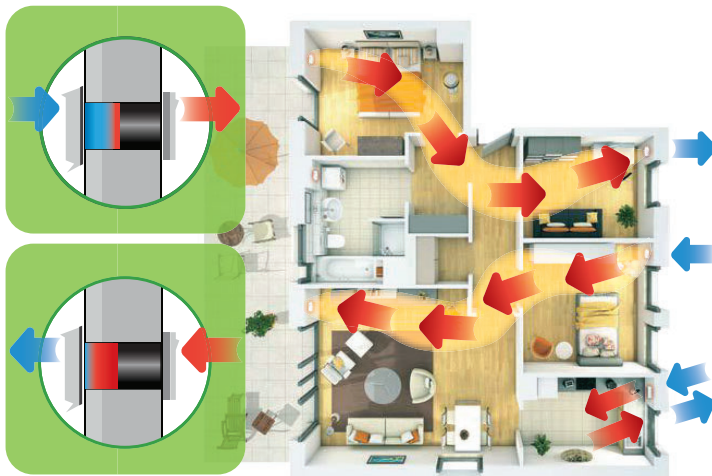
FAN7390



When nothing else seems to fit, **think SmartVent Fresh.**

The Fresh is a wall-mounted ventilation system designed to both supply and remove air from a space, while maintaining a comfortable temperature indoors through heat recovery. It's installed through the exterior wall of your home so it's perfect for downstairs spaces, homes with no roof access or roof space, apartments, basements and more.

As a decentralised heat recovery (dmVHR) the SmartVent Fresh works by absorbing energy in its ceramic core before reversing and returning that energy to the incoming air. It can scale to provide ventilation from individual rooms to entire properties. The units work stand-alone or communicate wired or wirelessly with up to 16 devices/sensors across 4 Ventilation Zones. Plus the system supports simple manual modes and advanced configuration via Bluetooth.



## DECENTRALISED HEAT RECOVERY VENTILATION SYSTEM



### Control Your Way

Control your system your way with App control or optional wireless wall control and sensors.



### Intelligent

Optional automation sensors respond to your home.



### Quiet & Efficient

Less power than a light bulb\* and quieter than a whisper\*, plus save on energy costs with **82%** heat recovery.



### No roof cavity? No problem!

Through wall system enables whole home heat recovery and ventilation, without having to go through the roof!



### Easily Scalable

Decentralized units are capable of operating stand-alone or in groups of up to 16 devices across 4 zones.



### Slimline

Suiting walls starting as slim as 140mm, you'll find it's designed for New Zealand homes.

## SmartVent Fresh Range

Description
SmartVent Fresh - dMVHR Decentralised Mechanical Heat Recovery with App control

### Optional Automation

Automate your system via add-ons like humidity, temperature, and CO<sub>2</sub> sensors, or easily operate manually.



## Features

App Control	
WiFi Connect	
Humidity Sensing	
Temperature Sensing	
Auto or Manual Operation	
Core Efficiency (°C)	Up to <b>82%</b>
Trickle Ventilation	
Boost Control	
Filter Change Alert	
Scheduler	

## Performance

Specification	Trickle (25%)	Medium (40%)	High (70%)	Boost (100%)
Efficiency	82%	72%	68%	60%
Extract/Heat Recovery (Pair)*	5.5 l/s (20m <sup>3</sup> /hr)	7.2 l/s (26m <sup>3</sup> /hr)	11.1 l/s (40m <sup>3</sup> /hr)	16.1 l/s (58m <sup>3</sup> /hr)
Power (Pair+Controller)	2.6W	3.5W	5.3W	10.1W
Heat Recovery (Single)*	2.8 l/s (10m <sup>3</sup> /hr)	3.6 l/s (13m <sup>3</sup> /hr)	5.5 l/s (20m <sup>3</sup> /hr)	8 l/s (28m <sup>3</sup> /hr)
Power (Single)	1.3W	1.75W	5.3W	10.1W
Sound	12dB(A)	24dB(A)	30dB(A)	37dB(A)

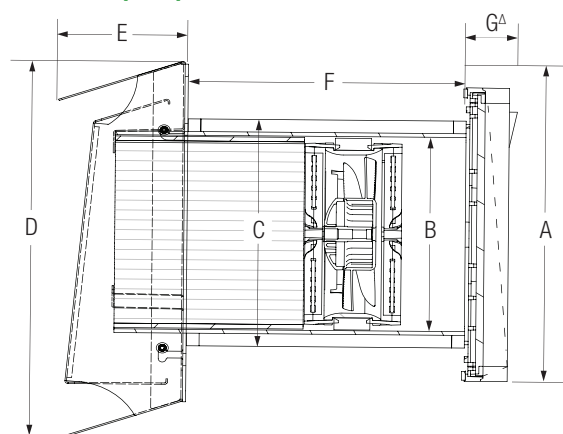
\* @2°C outside temperature

## Specifications

Fan Type	EC
Core Type	Ceramic Heat Recovery
Efficiency	Up to 82%#
Wall Opening	180mm
Wall Depth	≥140mm
Speeds	4
Extract Airflow (l/s)	5.6 - 16 l/s
Extract Airflow (m <sup>3</sup> /hr)	20 - 58 m <sup>3</sup> /hr
MVHR Airflow (l/s)	2.8 - 8 l/s
MVHR Airflow (m <sup>3</sup> /hr)	10 - 29 m <sup>3</sup> /hr
Power Supply	230V AC / 50 Hz
Power (W)	1 - 5W
SFP (W/(l/s))	0.48
SFP (W/(m <sup>3</sup> /hr))	0.13
Current (A)	0.17 - 0.19A
Operating Temp	-20°C to 50°C
Sound Pressure Level	12 - 37dB(A)
Sound Power Level	26 - 51dB(A)
Standard Sound Level Difference (dB)	32dB
Wireless Communication Protocol	RF866MHz
Wired Communication	RS485
Warranty	5 Years

# High efficiency core available on consignment

## Dimensions (mm)



A	B	C	D	E	F	G
270	Ø160	Ø180	276	80	≥140	44

\*Internal face (A) can be flush mounted.



Distributed by Simx Limited

Specifications are subject to change without notice

